

Making Space for Water

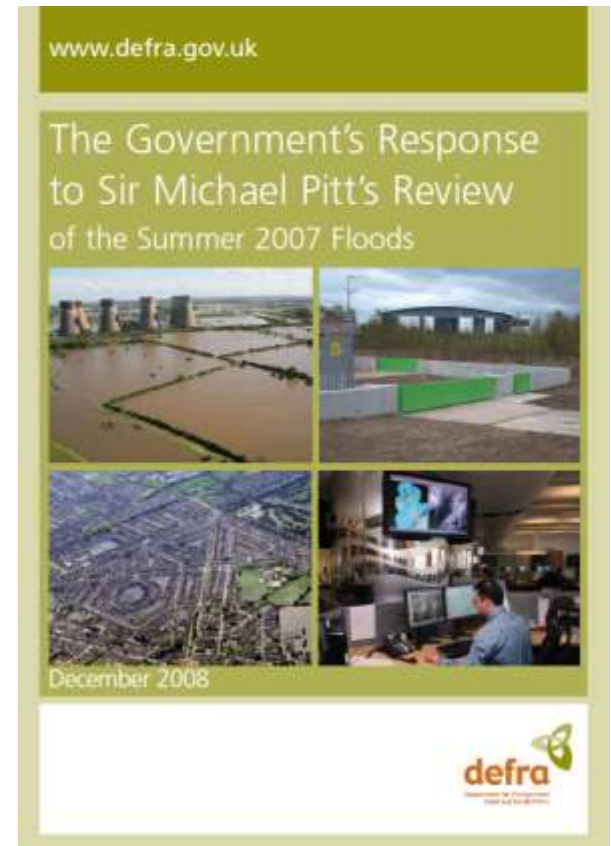
a Defra funded Multi-Objective Flood Management Demonstration Scheme

delivered through the
Moors for the Future Partnership



Defra's response to the Pitt Review

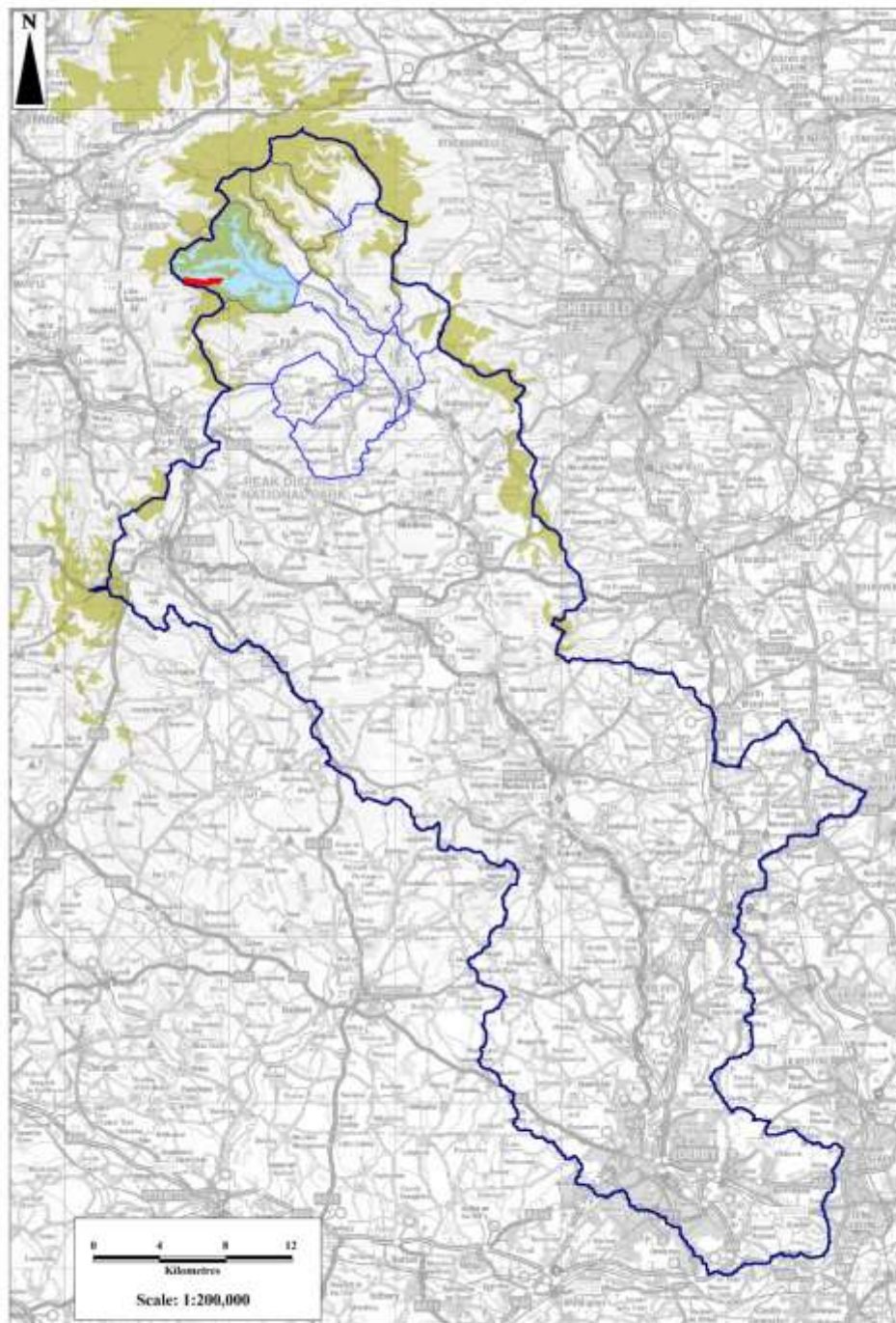
- As part of its response to the Pitt Review of the summer 2007 Floods, Defra provided nearly £1m of grant funding (2009/11) towards 3 innovative projects under the Multi-Objective Flood Management Demonstration Scheme.
- The Scheme aimed to generate evidence to demonstrate how integrated land management change, working with natural processes and partnership working can contribute to reducing local flood risk while producing wider benefits for the environment and communities.

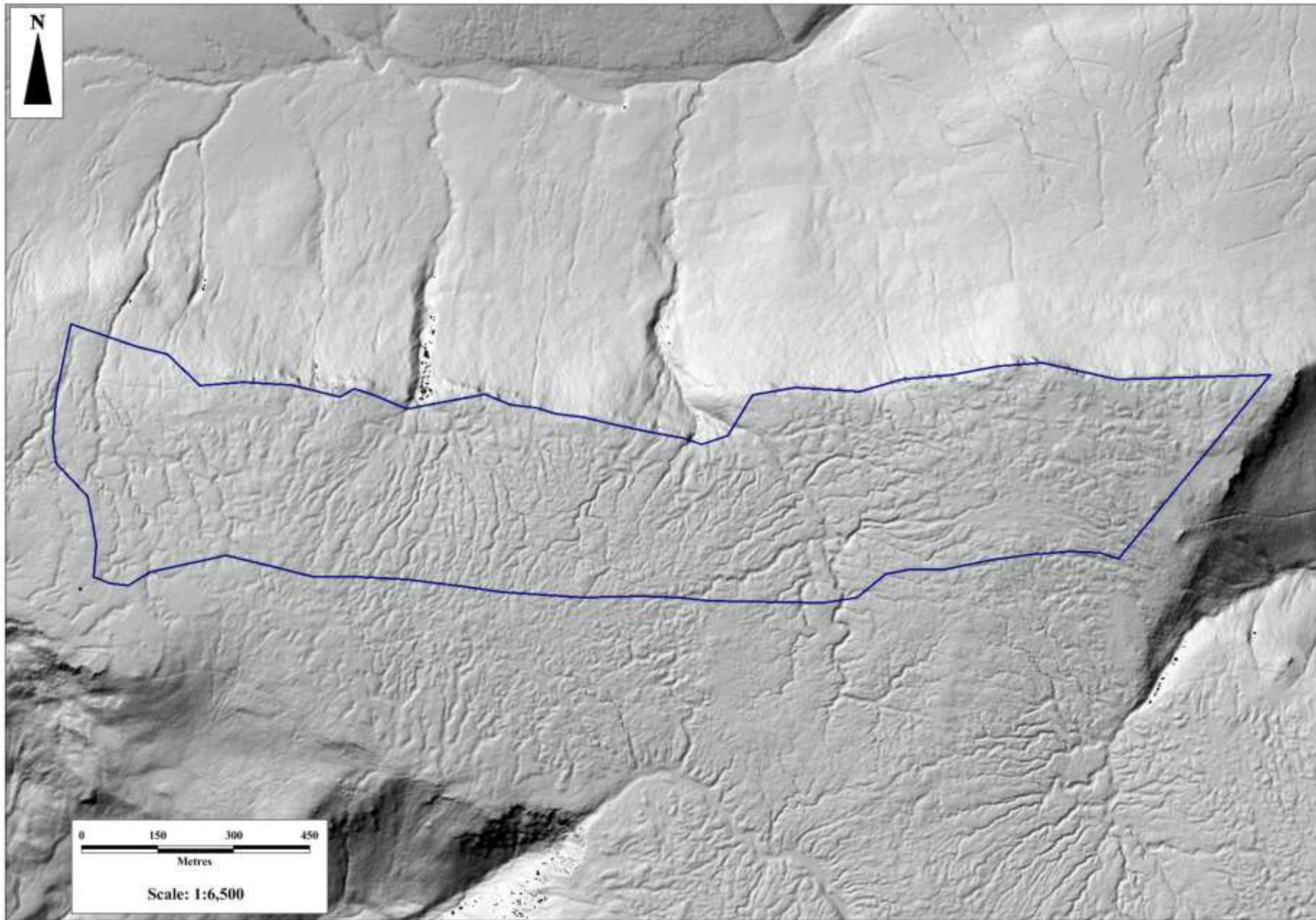


Making Space for Water project

- Making Space for Water project (MS4W) is was one of the three projects funded.
- Delivered for the Environment Agency by the Moors for the Future Partnership in collaboration with the National Trust and University of Manchester.
- It aims to evidence the impact of bare peat stabilisation and gully blocking in blanket bog habitat on flood risk, water quality and biodiversity.







MS4W phases 1&2

To date MS4W, has run for five years 2010 - 2015:

Baseline monitoring initiated	May/June	2010
Heather brash application	Winter/Spring	2011
Lime, seed and fertiliser application	Summer	2011
Gully blocking	Winter	2012
Lime and fertiliser maintenance application	Spring	2012
Plug plant application	Spring	2012
Lime and fertiliser	Spring	2013*

*application through the Catchment Restoration Funded "Peatland Restoration Project". Also: heather brash (Spring 2013), plug plants (Summer 2013), gully blocking (Jan & Aug 2013)

MS4W phase 2 objectives

There are three components of this project:

1. Field monitoring to evidence the impact of land management interventions on flood risk, water quality (DOC, POC) and biodiversity
2. Upscaling the flood risk impacts towards a policy relevant scale through modelling
3. An ecosystem service assessment of blanket bog restoration; assess the impacts of the interventions on other ecosystem services

