



**MFF 167 Package 2**  
**Westend Head Swains Greave**

## Table of Contents

1. WORKS QUANTITIES .....	4
2. WORKS DATES & PROGRAMME .....	4
2.1. Start Date .....	4
2.2. End Date .....	4
2.3. Restricted Dates .....	4
2.3.1. Ground works .....	4
2.3.2. Airlifting .....	5
2.4. Works Phasing.....	5
3. WORKS REQUIREMENTS – PACKAGE 2.....	6
3.1. Attendance at pre-start site visit and meeting.....	6
3.2. Materials Supply - Heather Brash and Bales.....	6
3.3. Materials supply – Gully Blocking Stone.....	6
3.4. Materials supply – Gully Blocking Timber.....	6
3.5. Materials supply – Lime and Fertiliser .....	6
3.6. Preparation of materials for aerial load lifting.....	7
3.7. Marshalling of Aerial Load Lifting & material deliveries.....	7
3.8. Spreading of heather brash.....	8
3.9. Installation of stone, timber and heather bale dams .....	8
3.10. Application of lime, seed & fertiliser .....	8
3.11. Temporary Trackway .....	8
3.12. Traffic management.....	9
4. WORKS SITE DETAILS .....	9
4.1. Work Site Name: Ronksley Swains Greave and Birchinlee Westend Head .....	9
4.2. Description of Works Site location: .....	9
4.3. Specified Access Points/Routes: .....	9
4.4. Access Restrictions: .....	10
4.5. Public Rights of Way / Footpaths:.....	10
4.6. Vehicles allowed on Works Site: .....	11
4.7. Livestock: .....	11
4.8. Hazards associated with the Works Site: .....	11
4.9. SSSI .....	11
4.10. Scheduled Ancient Monuments and other Archaeology.....	11
4.11. Other activities on work site.....	11
5. LIFT SITE DETAILS.....	11
5.1. Description of Lift Site location: .....	11
5.2. Specified Access points/routes: .....	12

---

5.3.	Access Restrictions: .....	12
5.4.	Lift Site Surface/ Temporary Trackway Requirements:.....	12
5.5.	Public Rights of Way / Footpaths:.....	12
5.6.	Vehicles allowed on Lift Sites:.....	12
5.7.	Hazards associated with the Lift Site: .....	12
5.8.	SSSI: .....	12
5.9.	Storage of Materials allowed at lift site: .....	12
5.10.	Helicopter refuelling permitted:.....	13
5.11.	Traffic management required:.....	13
6.	WORKS MAPS.....	13

## I. WORKS QUANTITIES

The works on the Westend Head Swains Greave site outlined in this document consist of 1 package of work. Tenders will only be accepted that offer to deliver the whole works detailed in this works package.

Table I below identifies the quantity of work to be delivered. Detailed requirements can be found in sections 3 and 4. Works site and lift site information can be found in sections 5 and 6. Works maps can be found in section 7.

Table I Table of Quantities

Activity (unit)	units	Number of units		Anticipated Delivery year
		NCPGS funded	STW funded	
Brash	bags (ha)	120 (0.3ha)	1288 (3.22ha)	25-26
Initial Lime, seed, fertiliser on 25/26 brash	ha	0.3	3.22	25-26
Gully blocking- stone dams/baffles	unit	171	444	25-26
Gully blocking- Timber dam construction	unit	-	175	25-26
Gully blocking- Heather bales	bale	-	150	25-26
Top-up Seed on 23/24 & 24/25 brash	ha	-	2.0	25-26
1st Maintenance L&F on 24/25 brash	ha	-	5.79	25-26
2nd Maintenance L&F on 23/24 brash	ha	-	2.05	25-26
1st Maintenance L&F on 25/26 brash	ha	-	3.52	26-27
2nd Maintenance L&F on 24/25 brash	ha	-	5.79	26-27
2nd Maintenance L&F on 25/26 brash	ha	-	3.52	27-28

## 2. WORKS DATES & PROGRAMME

### 2.1. Start Date

Late August / early September 2025

### 2.2. End Date

15<sup>th</sup> March 2028

### 2.3. Restricted Dates

#### 2.3.1. Ground works

- No ground works to be completed between 1<sup>st</sup> April and 31<sup>st</sup> July each year.
- Ground works between 1<sup>st</sup> August and 11<sup>th</sup> August (from 2026) *may* be permitted for certain activities, subject to stakeholder agreement, but **cannot** be relied upon.
- Ground works between 15<sup>th</sup> March and 31<sup>st</sup> March *may* be permitted, subject to stakeholder agreement and consents, but **cannot** be relied upon.
- There may be restrictions to access between 12<sup>th</sup> August and 4<sup>th</sup> December each year for sporting activities; Contractor to allow for up to 10 no. 2 day periods where no access for shoot dates will be allowed. Dates to be confirmed by MFFP as soon as available.

### 2.3.2. Airlifting

- The lift site can only be used for the airlifting of materials between 15<sup>th</sup> August and 15<sup>th</sup> March (inclusive) each year, (but noting 2025 start date).
- Installation of trackway and Delivery of materials (terrestrially) to the lift site can be undertaken between 12<sup>th</sup> August and 15<sup>th</sup> March (inclusive) (but noting later 2025 start date)
- use of the lift site (airlifting and removal of trackway) between 15<sup>th</sup> March and 31<sup>st</sup> March *may* be permitted subject to stakeholder agreement and consent, but **cannot** be relied upon.
- Use of the lift site for installing trackway and deliveries between 5<sup>th</sup> August and 12<sup>th</sup> August *may* be permitted subject to stakeholder agreement and consent, but **cannot** be relied upon.
- There may be restrictions to access between 12<sup>th</sup> August and 4<sup>th</sup> December each year for sporting activities; Contractor to allow for up to 10 no. 2 day periods where no access for shoot dates will be allowed. Dates to be confirmed by MFFP as soon as available.

### 2.4. Works Phasing

Table 2 below provides suggested outline phasing/timing of the different works elements. These are based on completing the works within the dates stipulated in section 2.1, 2.2 and 2.3. The Contractor is required to provide their proposed detailed programme for the works as part of the tender.

Table 2 Outline Works Phasing

Year	Period	Works element
2025-26	June to September 2025	Stakeholder engagement, consenting, procurement.
		Lift site prep (trackway) and delivery of stone
	September* 25 - 15 March 26	Airlift 1: airlift of Stone (615 units)
		Delivery of timber, bales, brash
		Airlift 2: airlift of Brash (1408bags), Timber (120), Bales (150).
		Installation and shaping of stone dams (1408)
		Spreading of heather brash (1408)
		Construction of timber dams (175)
		Construction of heather bale dams (150)
	01 February 26 - 15 March 26	Airlift 3: Airlift of LSF (and vascular plug plants*)
		Initial Lime, Seed and Fertiliser (LSF) 3.52ha
		1 <sup>st</sup> Maintenance Lime and Fertiliser (LF) 5.79 ha
		2 <sup>nd</sup> Maintenance Lime and Fertiliser (LF) 2.05 ha
2026-27	01 February 27 – 15 March 27	Airlift 4: Airlift of LSF (and vascular plug plants*)
		1 <sup>st</sup> Maintenance Lime and Fertiliser (LF) 3.52
		2 <sup>nd</sup> Maintenance Lime and Fertiliser (LF) 5.79
2027-28	01 February 28 – 15 March 28	Airlift 5: Airlift of LSF
		2 <sup>nd</sup> Maintenance Lime and Fertiliser (LF) 3.52

\*(planting of vascular plug plants not within scope of this tender, to be procured by MFFP separately)

### **3. WORKS REQUIREMENTS – PACKAGE 2**

Information on the works required to be delivered by the Contractor is provided below. Standard works specifications can be found in Appendix 8. Any site specific or works package specific requirements are stated below.

#### **3.1. Attendance at pre-start site visit and meeting**

The Contractor shall attend an on-site pre-start site visit/site walkover, and a pre-start meeting (online or in person). This shall be undertaken at time agreed between contractor and the MFFP Nominated Officer, but prior to works commencement.

#### **3.2. Materials Supply - Heather Brash and Bales**

The supply of the heather brash and heather bales will be tendered separately. (See works packages 3a and 3b). The Contractor shall however be responsible for receiving deliveries of brash and bales at the lift site.

#### **3.3. Materials supply – Gully Blocking Stone**

The Contractor will be required to supply a total of 462 tonnes of gully blocking stone for 615 stone dam units.

Gully blocking stone must be in accordance to specification. The Contractor shall state the proposed source quarry as part of their tender return.

**The access track to the lift site is not suitable for repeated movements of HGV's (i.e. 6 or 8 wheeler tipper wagons) for stone delivery. Stone should be delivered by tractor and trailer, or suitable alternative.**

The contractor shall identify in their tender return their proposed methodology for delivering the stone to the lift site; including details of any delivery sites if proposed to forward to the lift site from a separate delivery site.

The contractor shall include for managing deliveries of stone and any handling/stockpiling of stone required during deliveries; costs to be included either within stone supply rate or outlined as separate item in section I of the itemized costs.

#### **3.4. Materials supply – Gully Blocking Timber**

The Contractor will be required to supply timber for a total of 120 timber dam units.

Timber for the remaining 55 timber dam units are already available on the work site (supplied by MFFP).

#### **3.5. Materials supply – Lime and Fertiliser**

The contractor is required to supply the following quantities of Lime and Fertiliser, split by phase and material type. Note different Fertiliser supply specifications between the initial and maintenance fertiliser:

- Initial fertiliser NPK: 10:30:15%
- Maintenance fertiliser NPK: 10:15:15%

Refer to specifications for full details on Lime and Fertiliser specifications.

Contractor may propose for consideration alternative composition (NPK%) and application rate (kg/ha), however **must** achieve the same individual component nutrient application in kg/ha.

The Lime and Fertiliser must be packaged (bagged) suitably to allow airlifting and subsequent application, suitably protected from weather/moisture ingress whilst at the lift site or on the work site after airlifting prior to spreading.

MFFP propose the LSF and LF to be airlifted and dropped in dumpy bags containing correct quantities of materials equivalent to 50 brash bags (0.125 ha); 125kg Lime, 50kg Fert, 12.5kg seed per drop.

Works Year	Application area (ha)		Lime Quantity (kg)			Fert Quantities (kg)	
	Initial LSF	Maint LF	for initial	for maint	Total Lime	Initial Fert	Maint Fert
<b>2025/26</b>	3.52	7.84	3520	7840	<b>11,360</b>	<b>1420</b>	<b>3140</b>
<b>2026/27</b>	0	9.31	-	9320	<b>9320</b>	-	<b>3740</b>
<b>2027/28</b>	0	3.52	-	3520	<b>3520</b>	-	<b>1420</b>

### 3.6. Preparation of materials for aerial load lifting

The Contractor is required to sort the Materials into loads for transportation to the Works Sites by aerial load lift. It is the Contractor's responsibility to ensure that the means of sorting the Materials into loads and the transportation of loads are suitable and safe. The Contractor is responsible for supplying all Equipment (except airlifting strops) and Machinery required for preparing the loads for transport.

Materials that will require airlifting are as follows;

- Brash
- Heather bales (for gully blocking)
- Timber (for gully blocking)
- Stone (for gully blocking)
- Lime, seed and fertiliser
- Vascular plug plants (to be airlifted with LSF airlifts; planting of vascular plugs will be procured separately)

### 3.7. Marshalling of Aerial Load Lifting & material deliveries

The Contractor will be responsible for all marshalling of Aerial Load Lifting and material deliveries at the lift sites and works sites. Please refer to the main Tender document "MFF 167 2025-2028" for detailed information on marshalling requirements.

The lift site is adjacent to the Trans Pennine Trail (public bridleway) and therefore marshalling must include safely managing the public while vehicles and helicopters are in use. There are no PROWs on the works site, but the site is open access land with a number of desire lines, so the Contractor must ensure this is taken into account in marshalling the airlifting.

Estimated minimum marshalling requirements are identified in the itemised cost sheet, based on use of a typical ca. 900KG payload helicopter (e.g. capable of lifting 1 stone dam unit or 6-8 brash bags per lift). Should an aerial works contractor with greater payload/airlifting capacity be appointed by MFFP for airlifting of materials, it is acknowledged that the marshalling requirements will likely be greater and the rate specified in the itemised costs shall be pro-rated appropriately (to be confirmed at pre-start meeting).

### **3.8. Spreading of heather brash**

The Contractor will be required to spread 1408 bags of heather brash at the works sites and prepare empty bags for removal. It is anticipated that empty bags will be airlifted off site in February 2026 during the proposed LSF airlift (airlift 3). The Contractor will arrange for transport and disposal (for recycling at suitably licensed facility) of the waste bags.

### **3.9. Installation of stone, timber and heather bale dams**

The Contractor will be required to install & construct the following gully blocks at the work site:

- 615 stone dam units (514 locations), comprising:
  - Stone Dams 606 units at 517 locations.
  - Stone Baffles: 9 units at 7 locations
- 175 timber dam units (169 locations) and
- 150 heather bales (72 dams)

### **3.10. Application of lime, seed & fertiliser**

The contractor shall spread the materials by hand to the bare peat areas that have been treated with Brash. Spreading of LSF must occur during February or March only and subject to suitable weather conditions, outlined in the works specification.

The contractor shall, in their tender return, specify their methodology for spreading lime, seed and fertiliser in order to achieve even coverage at the correct application rate and their means for recording and tracking areas treated.

The contractor shall remove by hand all waste materials and take for disposal/recycling at suitably licensed facility.

### **3.11. Temporary Trackway**

The Contractor will be required to arrange supply & install a temporary trackway at the Lift Site, prior to the delivery of materials. The Contractor must remove the temporary trackway promptly as soon as airlifting work has been completed. The trackway for each phase should be suitable to withstand use by delivery vehicles and loading equipment anticipated for that phase of airlifting and provide an area that is large enough to allow access and egress to forwarding vehicles without them driving on any vegetation, and to allow storage of any Materials delivered to the Lift Site without affecting the surrounding vegetation.

The Authority estimates the size of the trackway surface required for airlifts as below

- For Stone and Brash airlifts: approximately 30 metre x 30 metre (900 m<sup>2</sup> total area); Heavy duty trackway recommended.
- For LSF airlifts: approximately 14m x 14m (200m<sup>2</sup> total area).

The Authority is requesting installation costs per phase and weekly hire-rates per phase from the Contractor in the itemised costs.

The trackway should be installed no more than a week before the commencement of the deliveries, and should be removed within one week of the last materials being removed from site associated with that particular phase. Estimated hire durations are detailed in the itemised costs sheet.



### 3.12. Traffic management

Contractor is to outline any traffic management or mitigation required for access or delivery of materials to the lift site.

Traffic management is not anticipated to be required on the A628 for the airlifting itself.

## 4. WORKS SITE DETAILS

### 4.1. Work Site Name: Ronksley Swains Greave and Birchinlee Westend Head

### 4.2. Description of Works Site location:

The site identified for restoration is blanket bog and located on and around the catchment watershed on Bleaklow. Figure 1 below shows the site. This is made up of two areas, Ronksley Swains Greave and Birchinlee West End Head and are entirely owned by the National Trust. The site lies within the South Pennine Moors 'Special Area of Conservation' (SAC) and the Peak District Moors 'Special Protection Area' (SPA). The site lies within the Dark Peak Site of Special Scientific Interest (SSSI) and the Peak District National Park (PDNPA).

### 4.3. Specified Access Points/Routes:

The access routes require access through locked gates. Keys will be provided to the Contractor, and the gates should be kept locked at all times.

Table 4 below shows the available access for each site, along with suitable lift sites. Details of each route can be found in table 4, and on the map in section 7.

Table 3 Access Points and Routes

Object ID (GIS)	Access Route	Description	Access Type	Grid Ref of start point
<b>Access routes from North (A628)</b>				
<b>109</b>	From Salters Brook via Far Small Clough	Pedestrian access only via Far Small Clough from Salters Brook (A628)	Pedestrian	413939 400006
<b>108</b>	From Woodhead tunnels via Far Black Clough	4x4 access from A628 using Woodhead estate gravel Track include Ford crossing)	4x4, pedestrian	411169 399852
<b>5782</b>	From top of Far Black Clough	Pedestrian access (from top of Far Black Clough 4x4 track). Avoid eroded track/bare ground. Potential for one-time use low ground pressure vehicle access subject to stakeholder agreement.	Pedestrian, Low ground pressure vehicle (one-time use on/off only)	412172 398653
<b>5781</b>	From top of Far Black Clough	alternative pedestrian access (from top of Far Black Clough 4x4 track)	pedestrian	412172 398653
<b>tbc</b>	From top of Far Black Clough	Potential "single use" access for low ground pressure vehicle onto North of site. Unsuitable for repeated movements. Subject to consultation with stakeholders	low ground pressure vehicle (one time use on/off)	412172 398653

<b>7</b>	Salter's Brook lift site	Access to Lift Site via bridleway track from A628.	Helicopter, 4x4, tractor, small wagon.	414064 400178
<b>Access routes from South (A57 and Upper Derwent Valley)</b>				
<b>106</b>	From Westend	Machine and 4x4 access from Westend ford to top of Westend Track (including ford crossing)	Excavator, 4x4, argocat/quad/softtrak, pedestrian	415492 392751
<b>5780</b>	From top of Ronksley Track	Pedestrian access route via Round Hill to Swains Greave/Barrow Stones/Grinah Stones plateau	pedestrian	413995 395453
<b>5783</b>	From top of Westend Track	pedestrian route to ford and field gate beneath Grinah Stones	pedestrian	413995 395453
<b>5790</b>	From top of Westend track	alternative pedestrian route to ford and field gate beneath Grinah Stones	pedestrian	413995 395453
<b>tbc</b>	From top of Westend Track	Potential "single use" access for low ground pressure vehicle onto Ridgewalk Moor and beyond. Unsuitable for repeated movements. Subject to consultation with stakeholders	low ground pressure vehicle (one time use on/off)	
<b>5383</b>	Off Westend Track	Indistinct trod direct onto ridgewalk moor from part way up Westend Track (useful if accessing on foot from ford). Passes through bracken dominated slopes.	pedestrian	414150 394490
<b>5382 &amp; 5784</b> (or via 5784)	Walk in from Snake Summit	Walk in from Snake Summit along Pennine Way to Bleaklow Head, then informal path towards Bleaklow Stones (or via alternative trod south east of Hern Stones)	pedestrian	408799 392918

Contractor to provide works notice & helicopter warning signs on the Trans Pennine Trail at the point where the helicopter overflies the footpath. (approx. 100metres apart either side of the lift site).

Works notice & helicopter warning signs on the entrance and exit points of the footpaths crossing the Work Site are also required.

#### 4.4. Access Restrictions:

No access/works during bird breeding season, nominally 16<sup>th</sup> March to 11<sup>th</sup> August inclusive (for ground works, or 16<sup>th</sup> March to 14<sup>th</sup> August (for airlifting).

Works may be possible between 1<sup>st</sup> August and 11<sup>th</sup> August and 16<sup>th</sup> March to 31<sup>st</sup> March, subject to consent and stakeholder agreement, however should not be relied upon.

#### 4.5. Public Rights of Way / Footpaths:

The delivery & Lift Site is to the West of the Trans Pennine Trail bridleway. The Contractor will need to marshal this while delivery and airlifting is taking place. There are no PROWs on the site,

but the site is on open access land under the CROW Act, so the Contractor is expected to take this into account.

#### 4.6. Vehicles allowed on Works Site:

Only suitably low-ground-pressure vehicles (<3psi) may be taken onto the works site for transport of required materials/equipment associated with the works and any low ground pressure vehicle movements to/from 4x4 access points shall be minimised. Vehicles shall not be used on the moor for the sole purpose of personnel transport. The mitigations outlined here and in Appendix 1 are considered sufficient and appropriate for preventing damage to blanket bog or localised dry heath habitats routes may cross.

Contractors requested access for low-ground-pressure vehicles to be outlined in their tender return for consideration and subsequent consultation with stakeholders. Overview of access points and outline routes as per Figure 4 and Table 4..

Existing established (aggregate and/or tarmacadam) tracks may be used for normal road vehicle / 4x4 access onto site.

#### 4.7. Livestock:

Sheep graze parts of the Work Site seasonally. The Contractor must ensure their works do not allow sheep to escape.

#### 4.8. Hazards associated with the Works Site:

Grouse shooting takes place on the Woodhead Estate to the north of the work site and on work site itself (part of Ronksley and Birchinlee stakeholder areas)

No site access or works will be allowed on or 1 day before any shoot dates on relevant site or access route. Shoot dates are as yet unknown, but will be communicated to Contractor as soon as dates are confirmed; Contractor should allow for up to 10no. 2 day stand downs associated with shoot dates.

#### 4.9. SSSI

The site is located within the Dark Peak SSSI. SSSI Consent/Assent will be arranged by MFFP in co-ordination with the National Trust (and United Utilities for the lift site). No works shall commence prior to confirmation from MFFP that SSSI consent/assent has been granted.

#### 4.10. Scheduled Ancient Monuments and other Archaeology

There are no identified Scheduled Monuments or Listed Buildings on the sites, however there are 17 cultural heritage assets or findspots, 13 on Birchinlee Westend Head and 4 on Ronksley Swains Greave. Archaeological interest in boundary stakes has been highlighted; works shall avoid damaging these features.

#### 4.1. Other activities on work site

Sphagnum planting and Vascular plug planting (to be procured separately) will undertaken on the work site concurrent to the works in this package. The contractor shall have due regard for the presence of other contractors and allow for liaison with MFFP's appointed planting contractor to coordinate a safe working programme.

## 5. LIFT SITE DETAILS

#### 5.1. Description of Lift Site location:

The delivery & Lift Site is to the West of the Trans Pennine Trail bridleway, south of the A628 at Salter's Brook (SE 14049 00131). The lift site location is shown in figures 1,2 and 3.

---

#### 5.2. Specified Access points/routes:

A key is required for the gate at the top of the access track for the lift site.

Access Track / Road Surface: Aggregate surface.

The width of the gates is estimated to be 10' and has been used for deliveries by tractor and trailer previously.

#### 5.3. Access Restrictions:

The lift site can be used for delivery and storage of materials between 12<sup>th</sup> August and 15<sup>th</sup> March (inclusive). The lift site will be used for the airlifting of materials between 15<sup>th</sup> August and 15<sup>th</sup> March (inclusive).

Use of the lift site between 16<sup>th</sup> March and 31<sup>st</sup> March may be possible subject to consents and stakeholder agreement, however cannot be relied upon.

There may be restricted access between 12<sup>th</sup> August and 4<sup>th</sup> December each year for sporting activities. Shoot dates are as yet unknown, but will be communicated in advance to contractor as soon as dates are confirmed; contractor should allow for up to 5 no. 2 day stand downs associated with shoot dates affecting the lift site.

#### 5.4. Lift Site Surface/ Temporary Trackway Requirements:

A temporary trackway and operating area measuring approx. 30m x 30m shall be installed on the site of the old peat cutting, on the west side of the Trans Pennine Trail bridleway approximately 350m from the carriageway. This site is proposed for use for delivery and airlifting of brash, stone, timber, heather bales, lime, seed and fertiliser.

#### 5.5. Public Rights of Way / Footpaths:

The delivery & Lift Site is to the West of the Trans Pennine Trail bridleway. The Contractor will need to marshal this while deliveries and airlifting is taking place.

#### 5.6. Vehicles allowed on Lift Sites:

Tractors, trailers and delivery of trackway can access lift site along the Trans Pennine Trail. 4x4 vehicles with suitable ground clearance may access along the Trans Pennine Trail.

Standard 8 Wheeler tipper wagons (e.g. for stone delivery) are NOT permitted to access the lift site. The Contractor shall propose their means of stone delivery in their tender return.

#### 5.7. Hazards associated with the Lift Site:

This area is close to the A628 Woodhead pass and may suffer from theft and anti-social behaviour. Contractors should consider this when planning to leave materials or vehicles unattended.

Access to the lift site track is off a bend on the A628 (national trunk road, busy single carriageway) opposite a junction with a minor road (Goddard Lane). Sightlines from the access track are reasonable when visibility (weather/daylight) is good. Hazards associated with accessing the Lift site **must** be considered in the contractors RAMS, including preventing tailbacks for site access and any necessary traffic management rules.

Grouse shooting may takes place on the Woodhead estate (between the lift site and work site), and on Lady Cross Moor (to the east of the lift site) .

#### 5.8. SSSI:

Yes. SSSI consent pending.

#### 5.9. Storage of Materials allowed at lift site:

Yes, bowser only on hard standing or temporary track way. No overnight storage of fuel.

**5.10. Helicopter refuelling permitted:**

Yes, bowser only on hard standing or temporary track way. No overnight storage of fuel.

**5.11. Traffic management required:**

Traffic management on the A628 is not anticipated as necessary during airlifting.

The Contractor shall consider their methodology for deliveries/access to the lift site and the need for any traffic management/banksman.

The Contractor must avoid tracking of mud/soil/debris onto the highway from the lift site access or any proposed delivery/forwarding site.

## **6. WORKS MAPS**

Maps I-III below show the locations of the works.

1. Work site location map
2. Lift site location map
3. Lift site layout and aerial photo
4. Proposed Stone dams and brash (MCA 2 funded)
5. Proposed Stone dams and brash (STW funded)
6. Proposed Stone dams and brash (All)
7. Proposed Brash drops and iLSF
8. Proposed timber dams and heather bale dams
9. Proposed mLF (25/26)
10. Proposed mLF (26/27)
11. Proposed mLF (27/28)



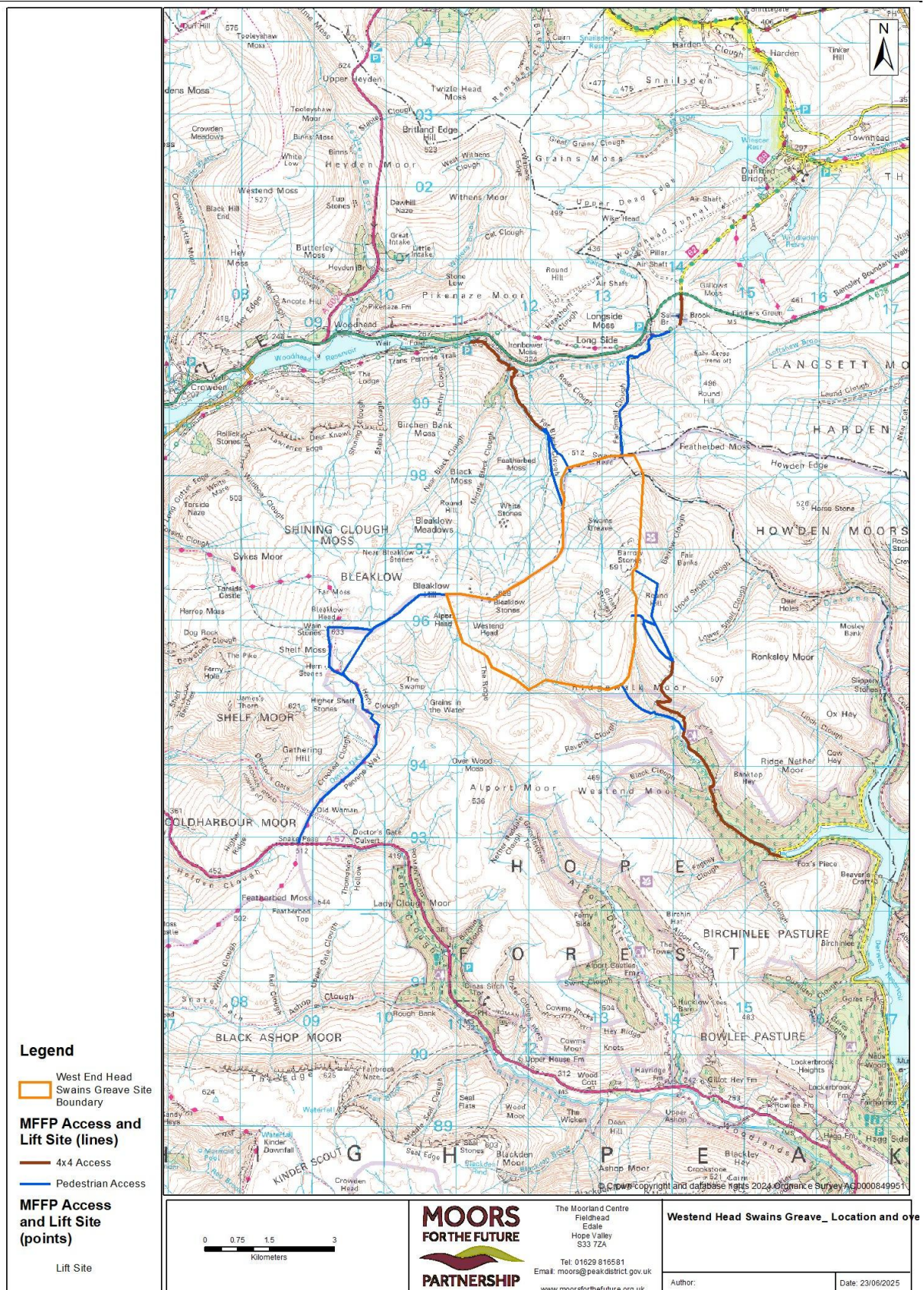


Figure 1 Works Site Location Map (and overview of access routes)



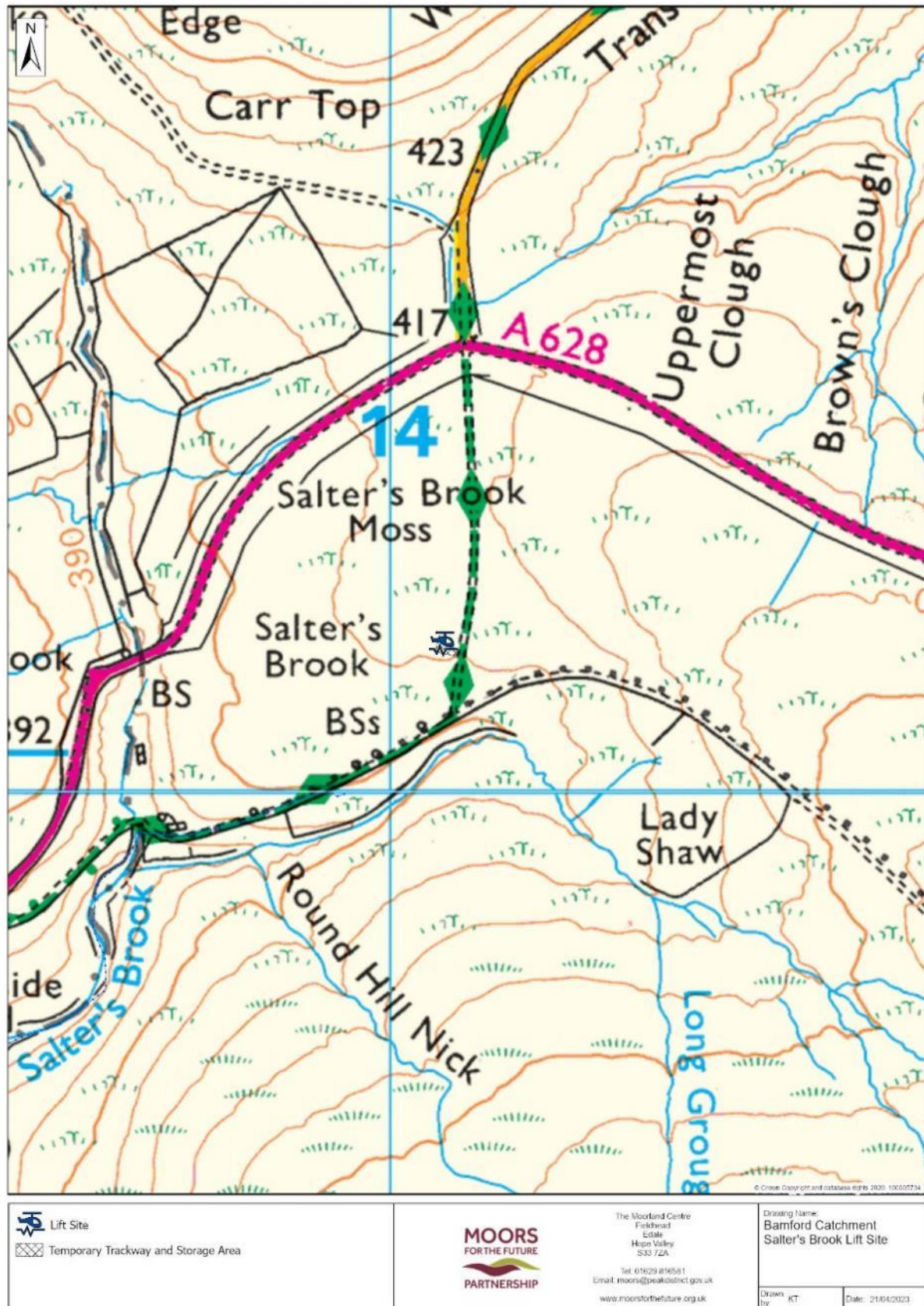


Figure 2 Lift Site Location Map



Figure 3 Lift Site Aerial Photo and proposed layout



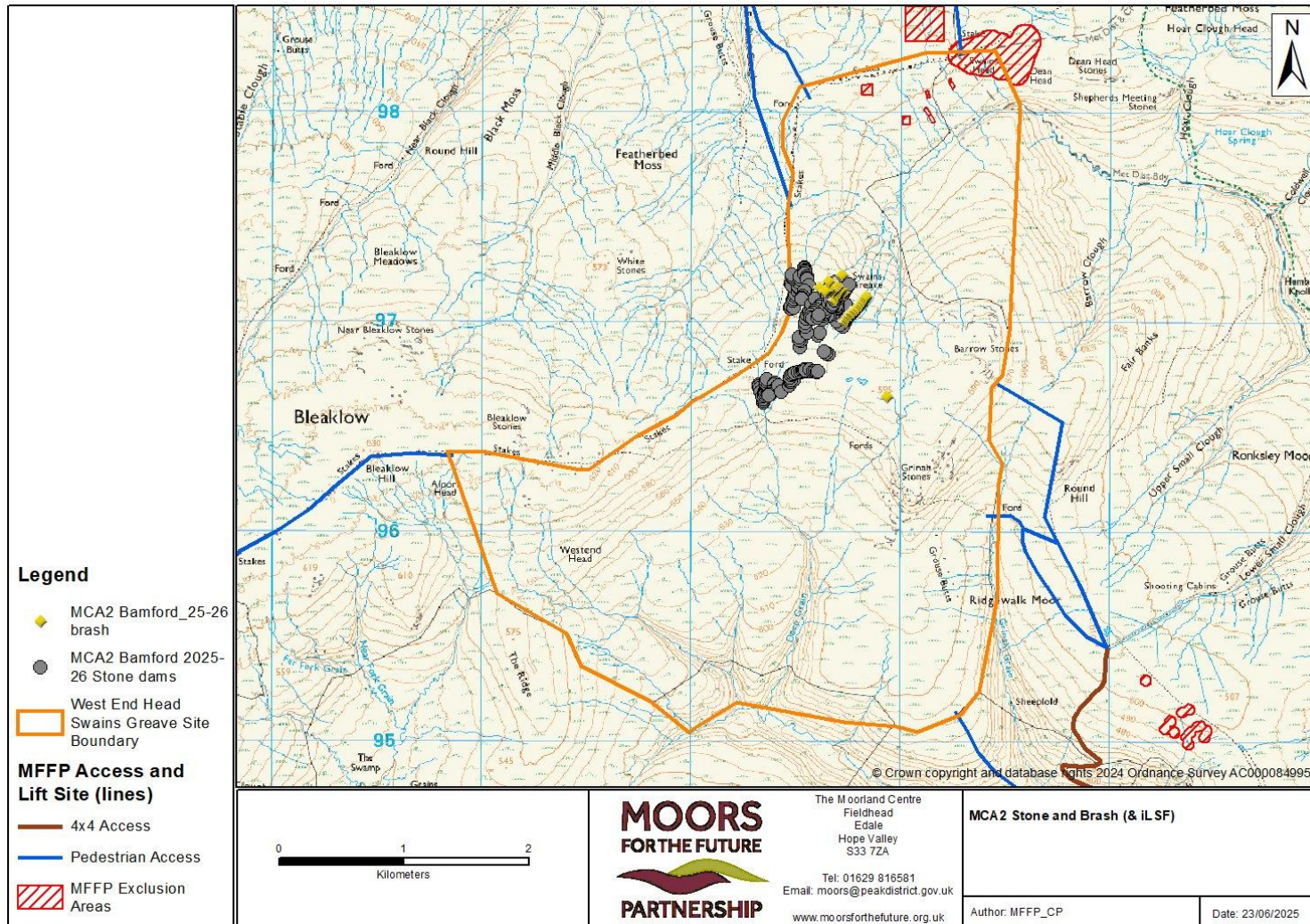


Figure 4 MCA2 Stone dams and Brash (& iLSF) (for 2025/26)



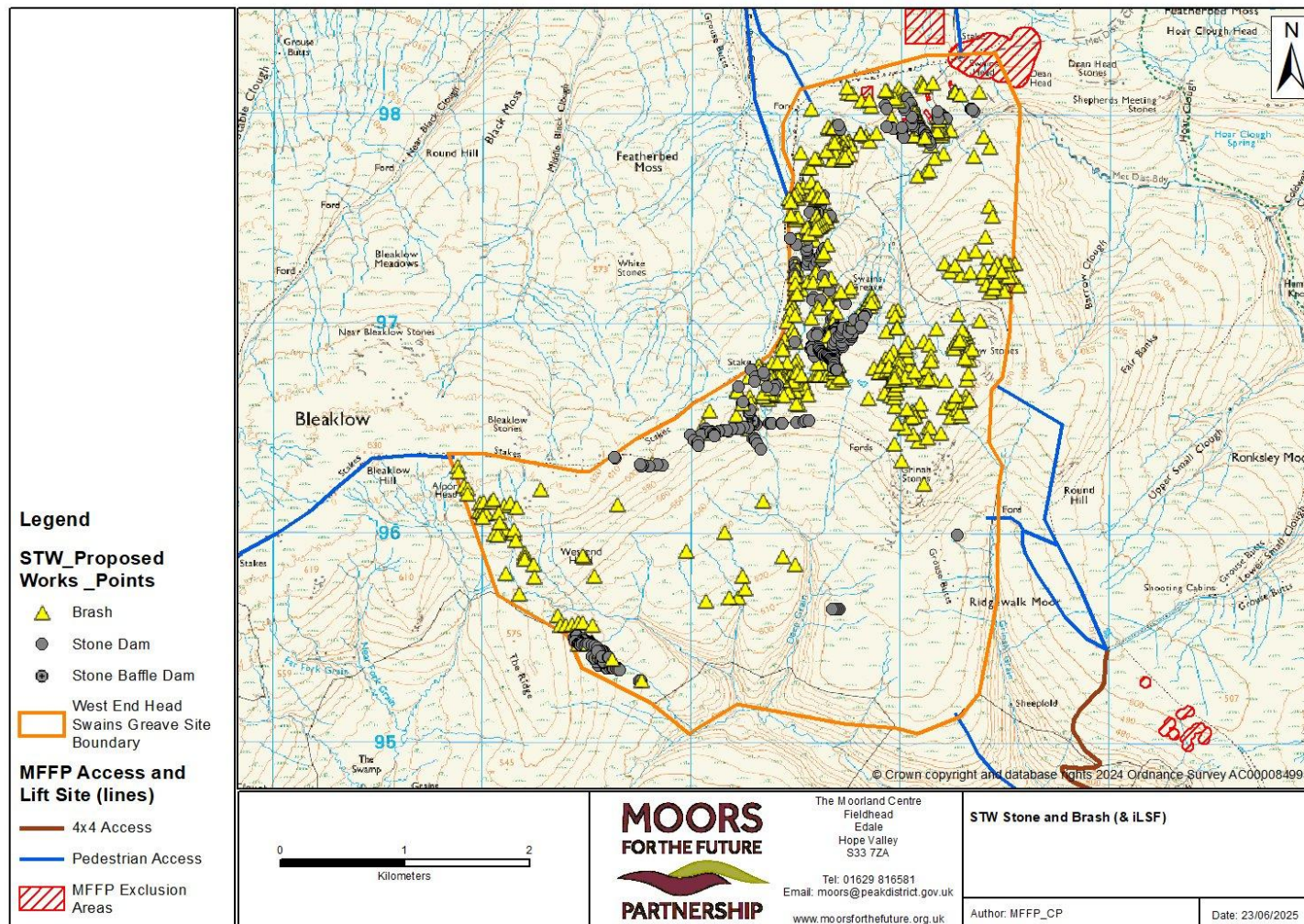


Figure 5 STW Stone dams and Brash (& iLSF) For 2025/26



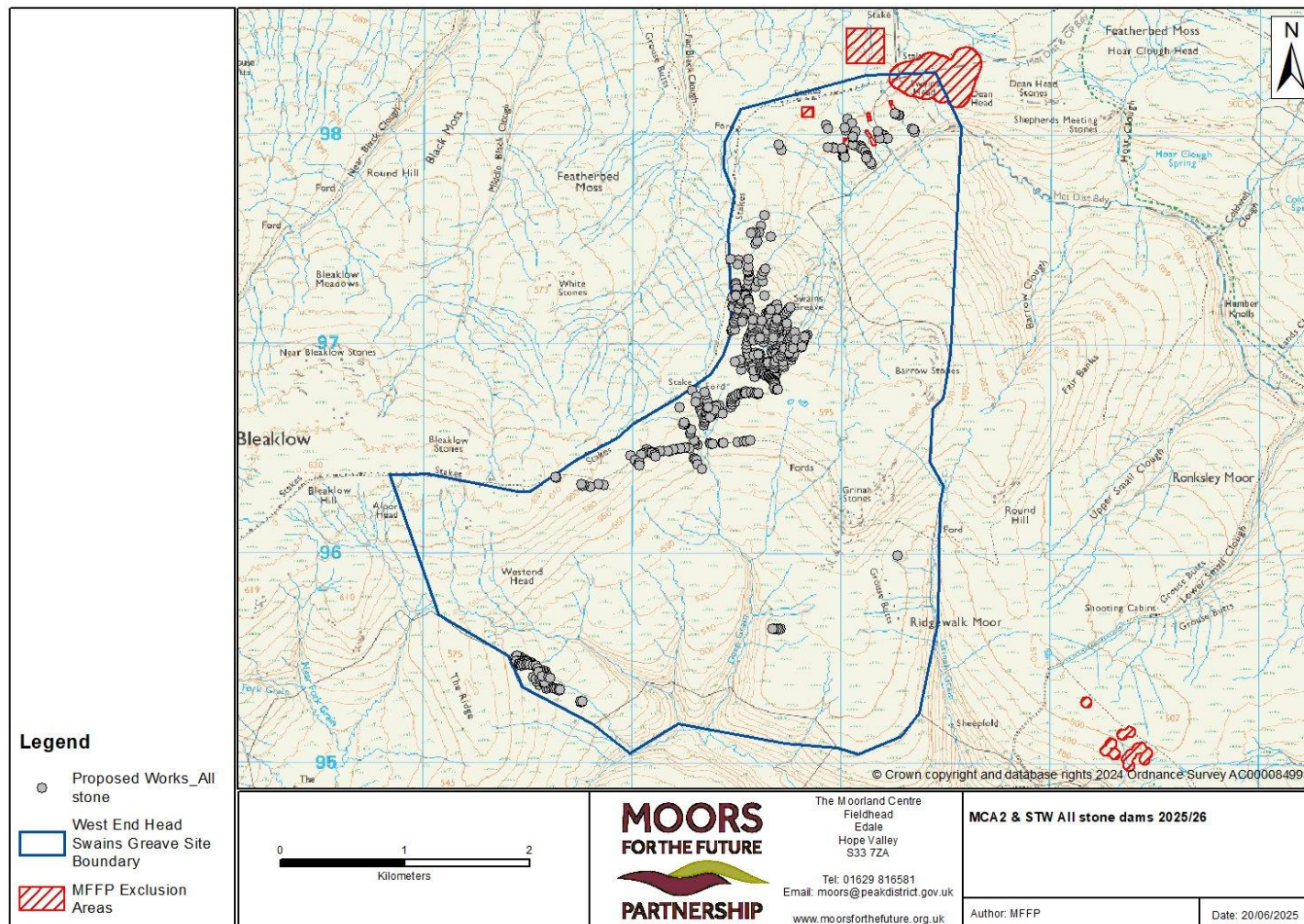


Figure 6 MCA2 and STW; All stone dams (for 2025/26)

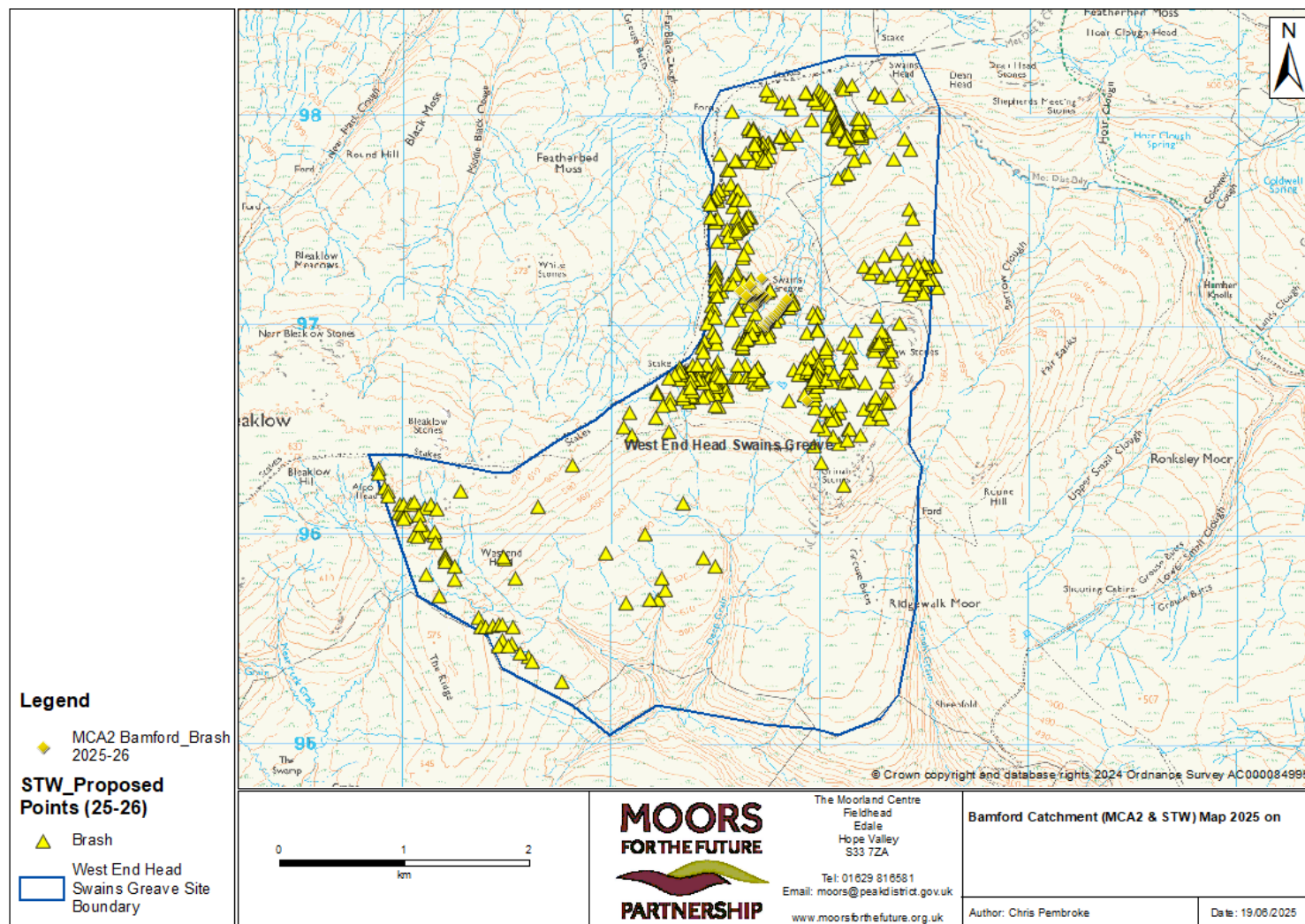


Figure 7 MCA2 and STW: All Brash and iLSF (for 2025/26)



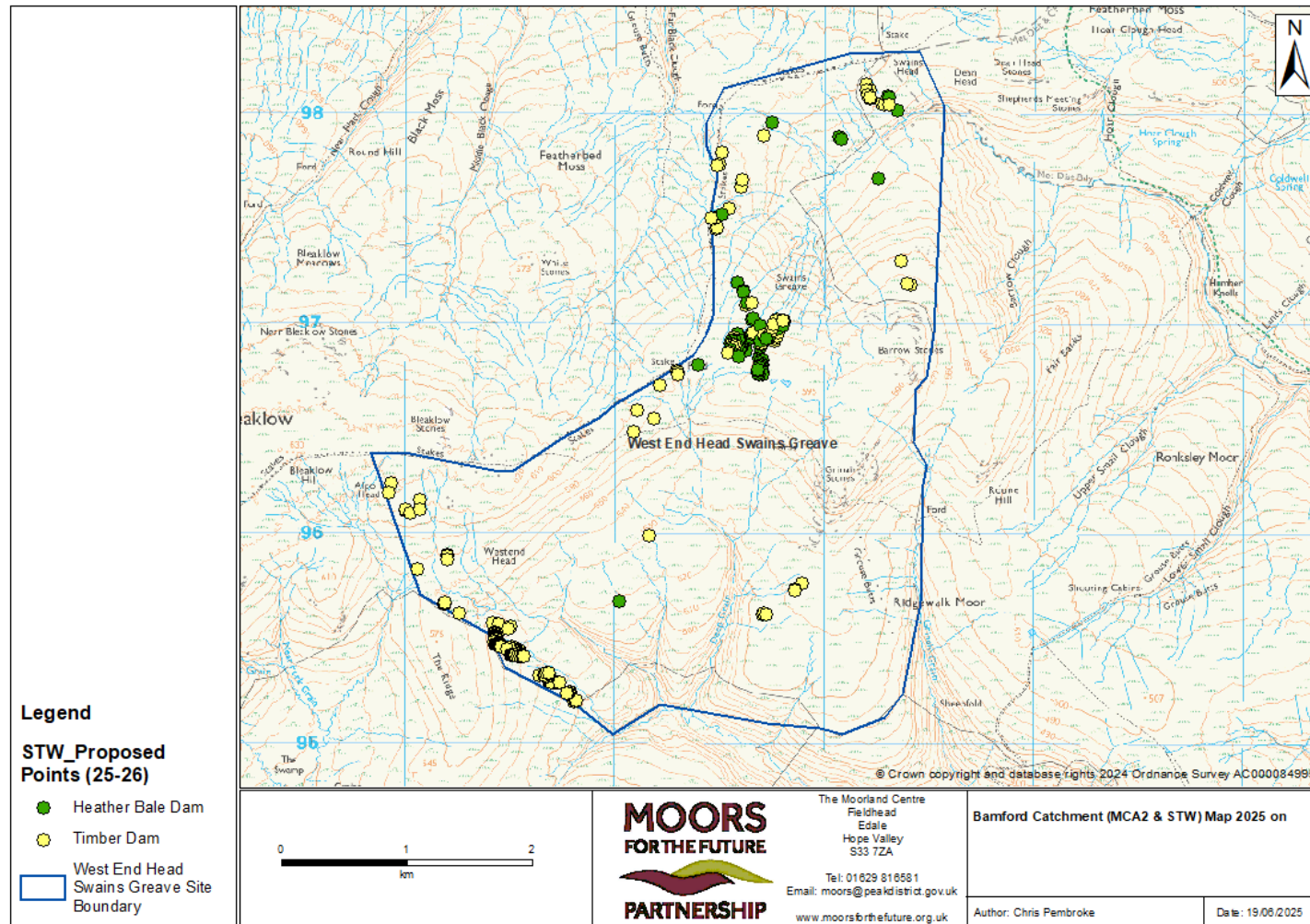


Figure 8 STW Timber and heather Bale dams (2025/26)

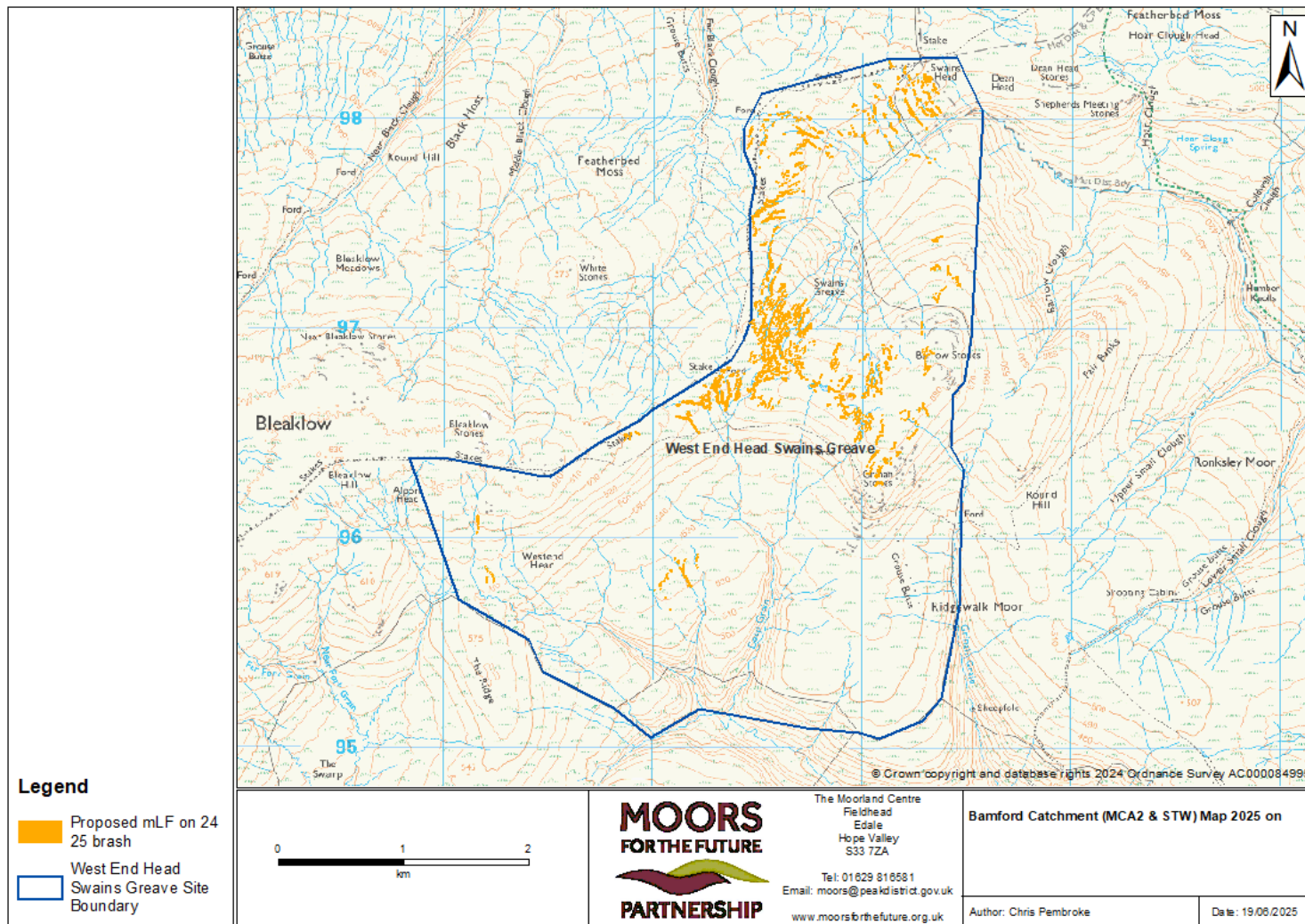


Figure 9 Maintenance L&F for application 2025/26



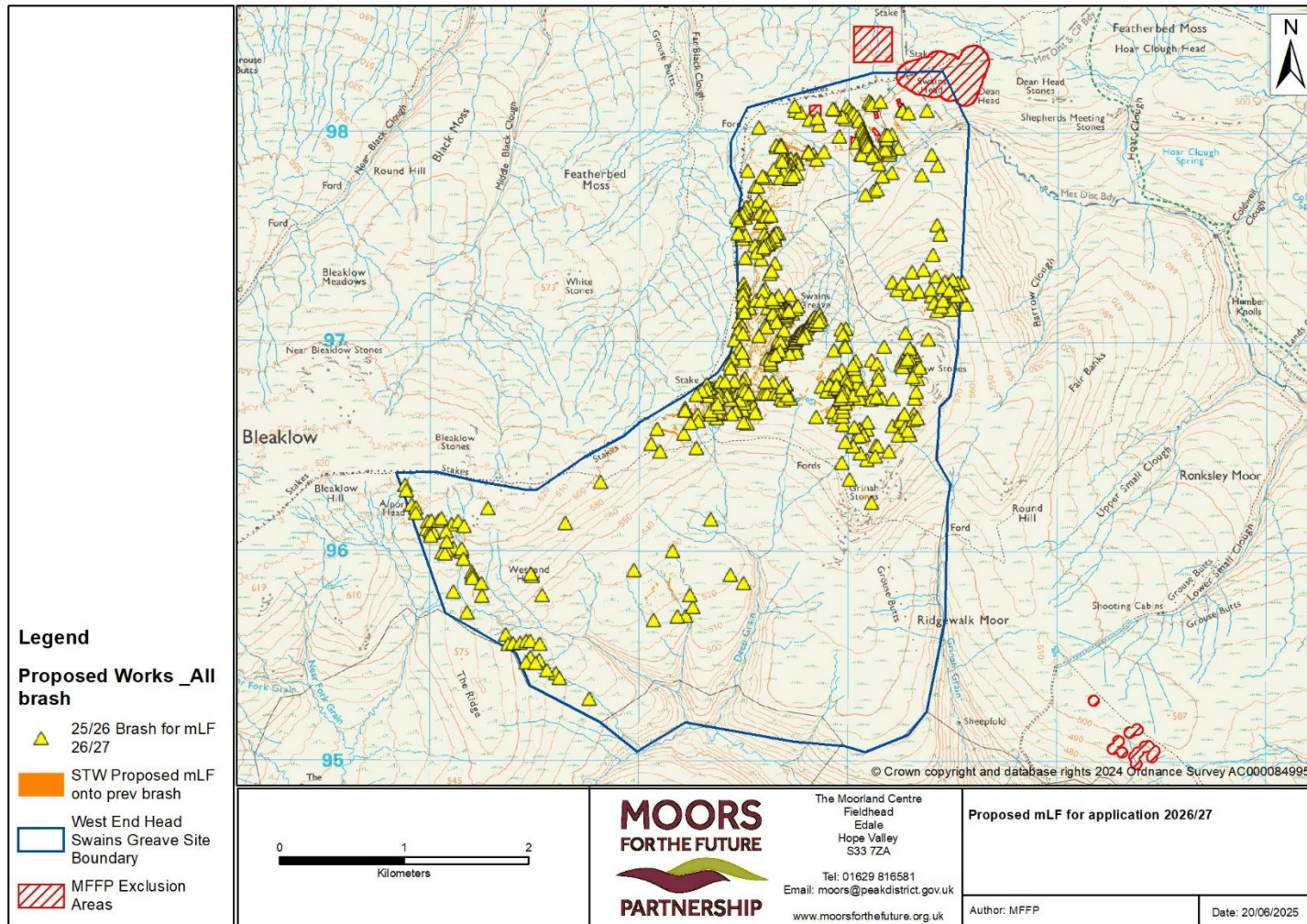


Figure 10 Proposed mLF for application 2026/27 (2nd mLF onto 23/24 brash and 1st mLF onto 25/26 brash)



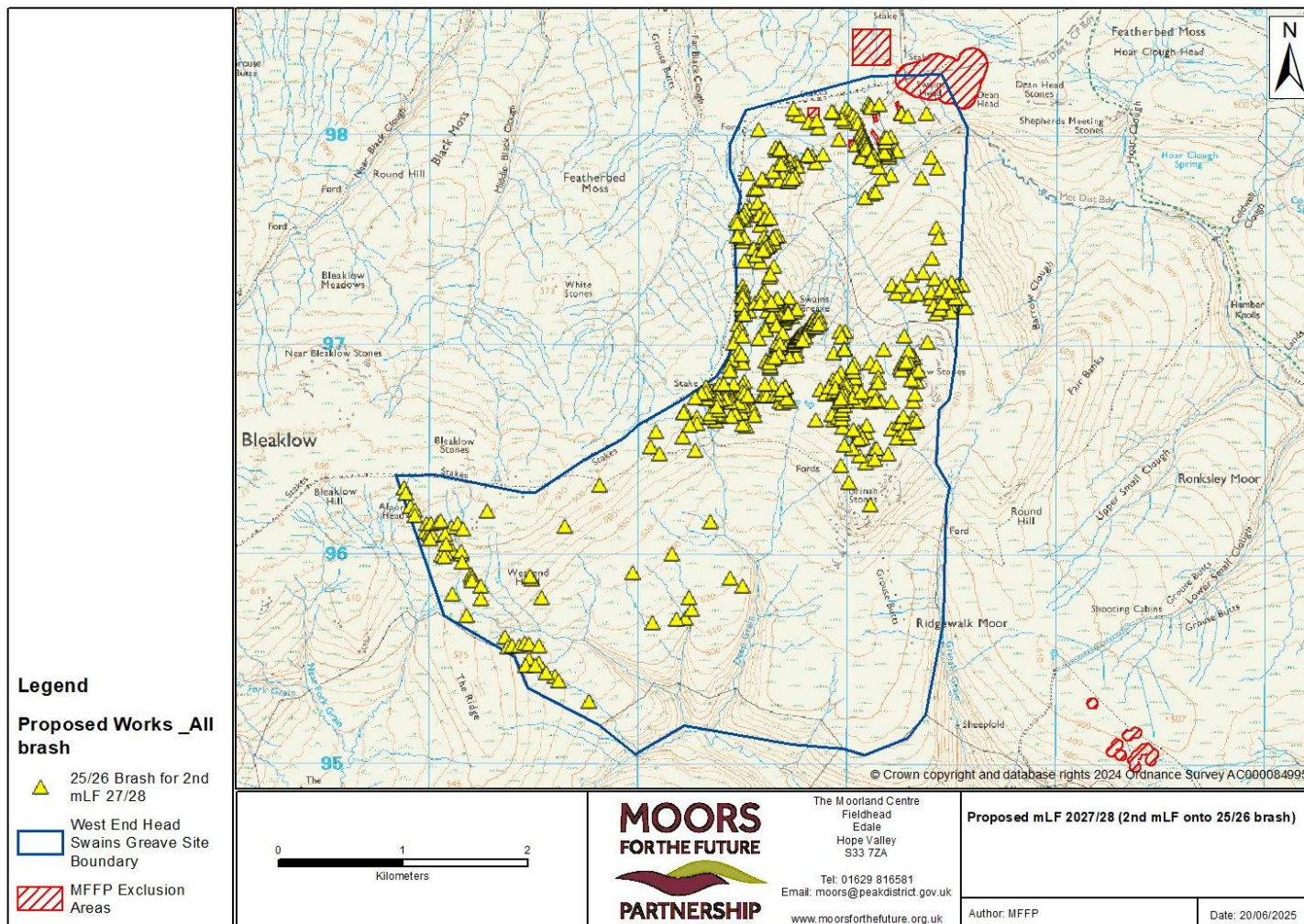


Figure 11 Proposed mLF 2027/28 (2nd mLF onto 25/26 brash)