

# Working in partnership at a landscape scale

**Matt Scott-Campbell**

Project Manager– Conservation and Land Management  
Moors for the Future Partnership

# Drivers of Moorland Degradation

- Air pollution
- Wildfires
- Weather
- Drainage
- Access by people
- Competition from non-native plants
- Grazing levels, particularly on damaged land



1976



2003

The same family 27 yrs. later with a metre of the surface gone







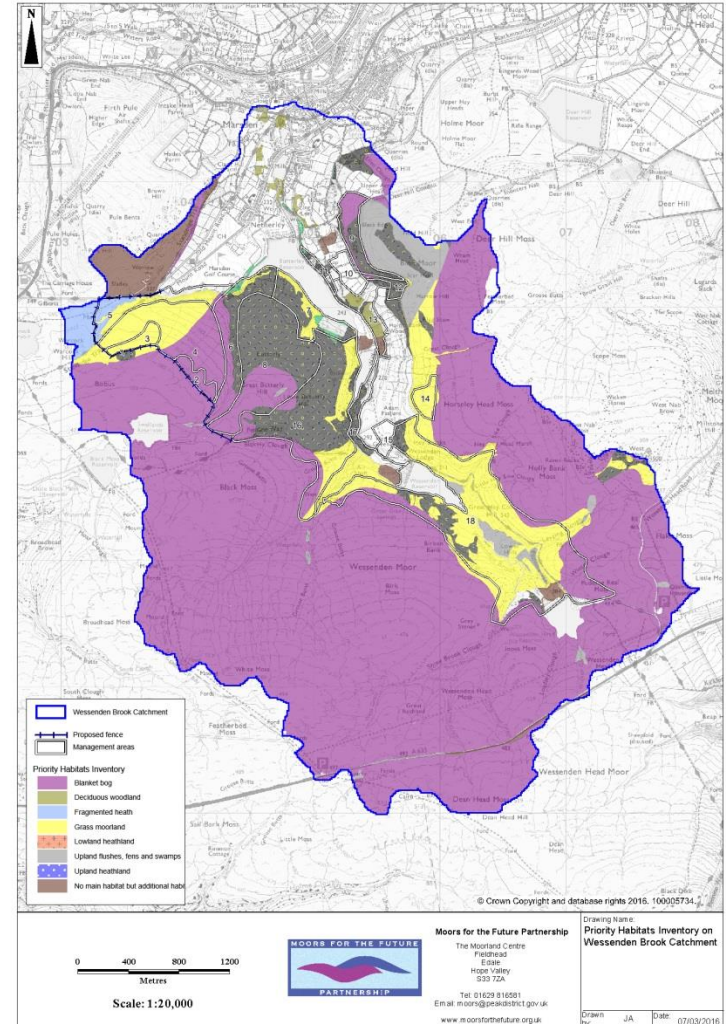
Bleaklow, bare peat prior to treatment (foreground) next to restoration site (right)

# Restoring severely damaged Blanket Bog



# Why work in Partnership?

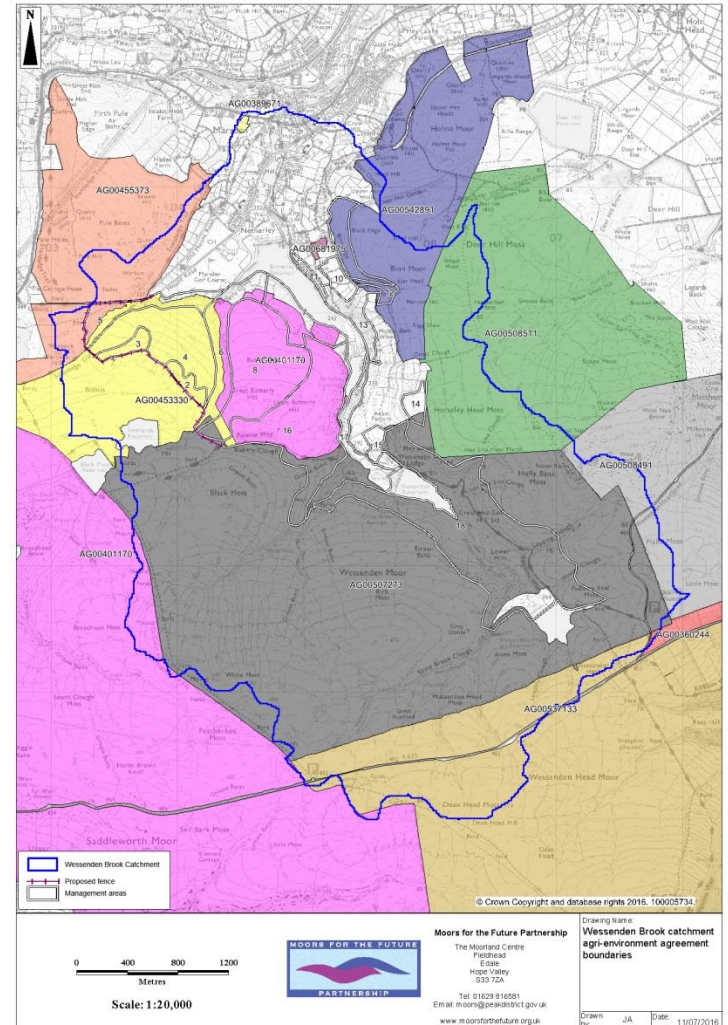
- Benefits come from the whole landscape
- Different habitats
- Not related to land ownership
- Different reasons for land management



# Why work in Partnership?

## Wessenden valley moors

- Private landowners
- National Trust
- Yorkshire Water
- 9 projects between 2003 and 2021





# Working with private landowners – what we do

- Agree outcomes with land manager, NE and, where possible, other stakeholders
- Deliver Assigned works from HLS agreements
- Supervise works and tendering and liaise with NE advisers
- PDNPA Bankroll works contracts, supervision work and VAT
- Submit claims to Natural England
- Tie in claims to agreement holders with revenue payments



# Working with private landowners – what have we done

- MFFP have delivered two programmes:
- NECPP 2008-2013 / PLP 2013-2018
- Worked with 22 landowners
- Revegetated 752 ha of bare peat (ongoing)
- Total project budget of £8 Million since 2008
- Taken 1 Minister, 3 MPs, Chair of NE, Chair and Chief Executive of EA onto site to see what has been achieved through our partnership together.



# Contributing Partners



YorkshireWater

